

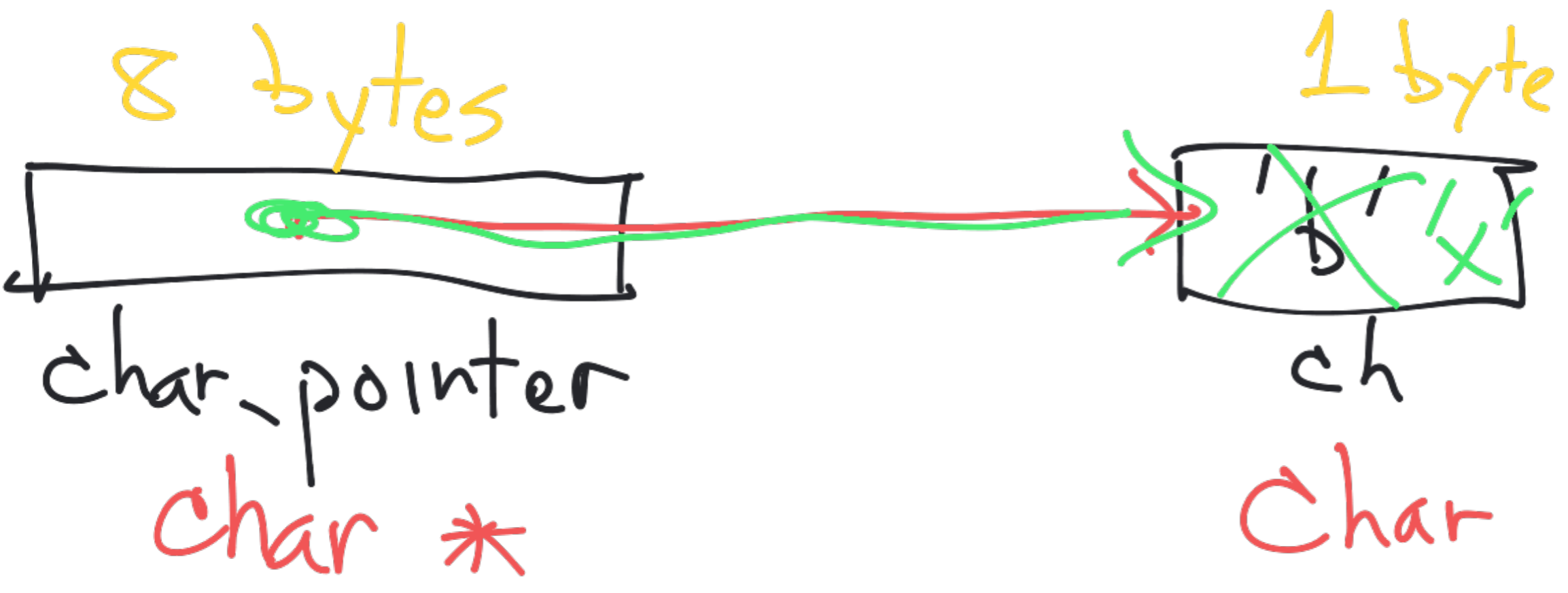
CS 208

Friday

(Whoa!)

14 Jan

2022



*char_pointer = 'X';

0x7fed7087965

ch

0x7fed7087965

char_pointer

0

Program
code

Global vars

heap

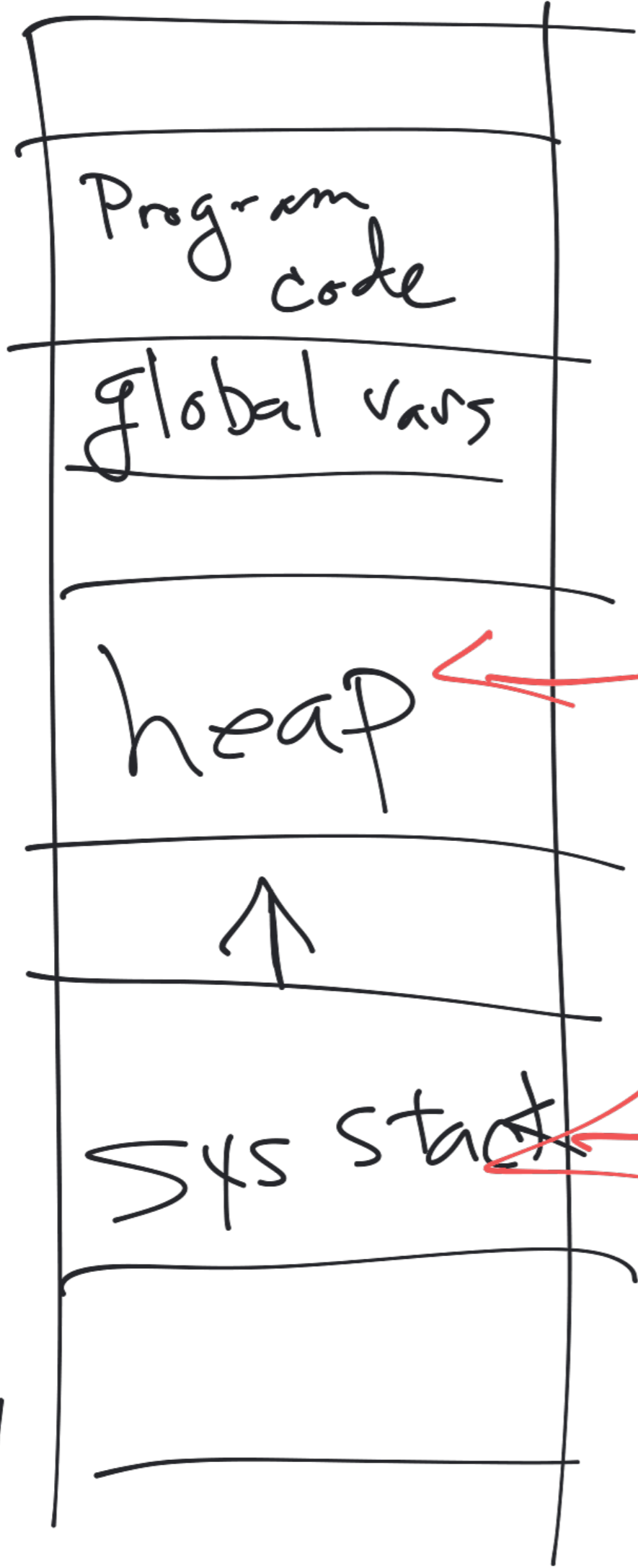
↑

sys start

$2^N - 1$

malloc

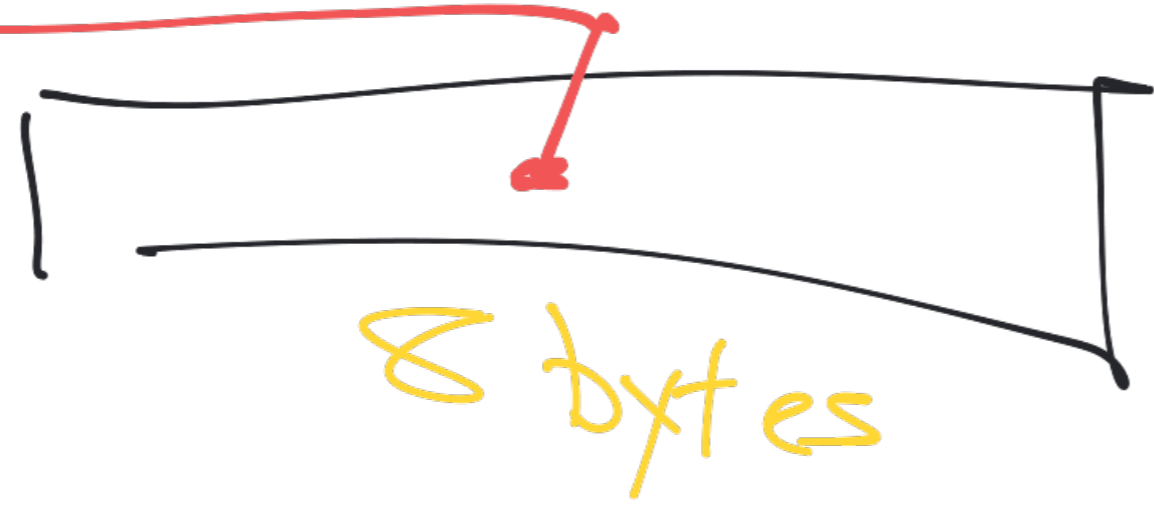
local
variables



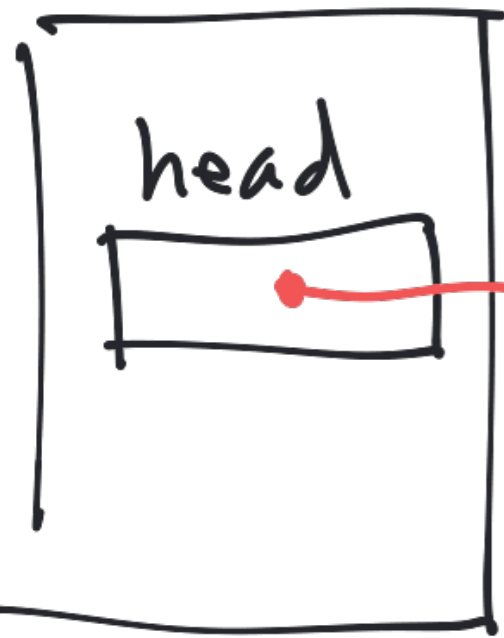


name
(padding to get a multiple of 4)
leg_count

animal
animal_t



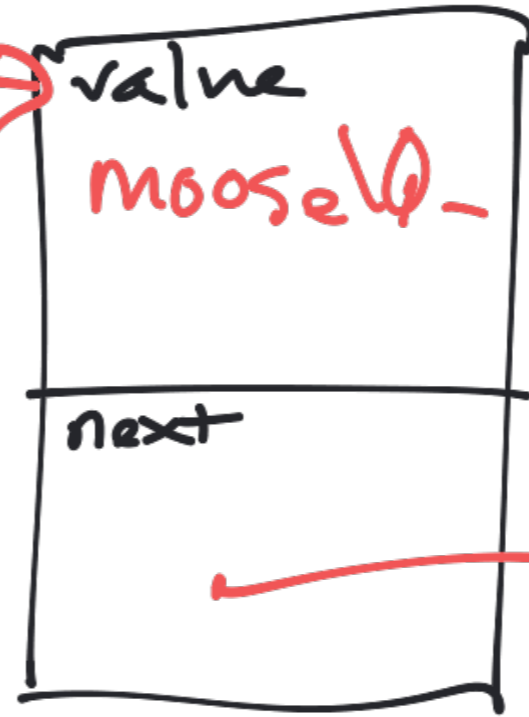
linked_list



first_node



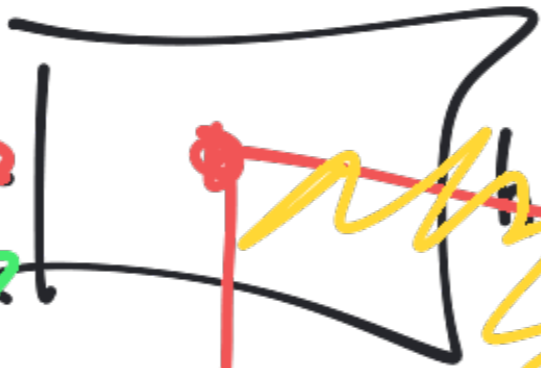
second_node



third_node



linked_list



head

...

node

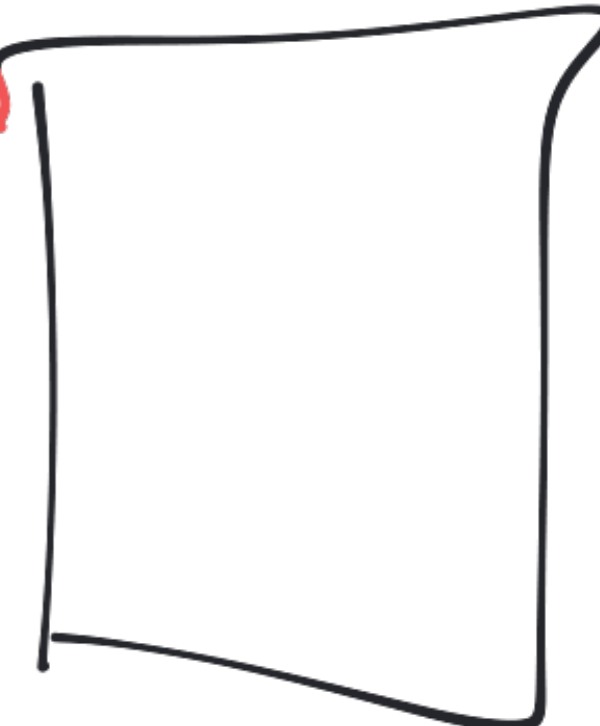


varibouly

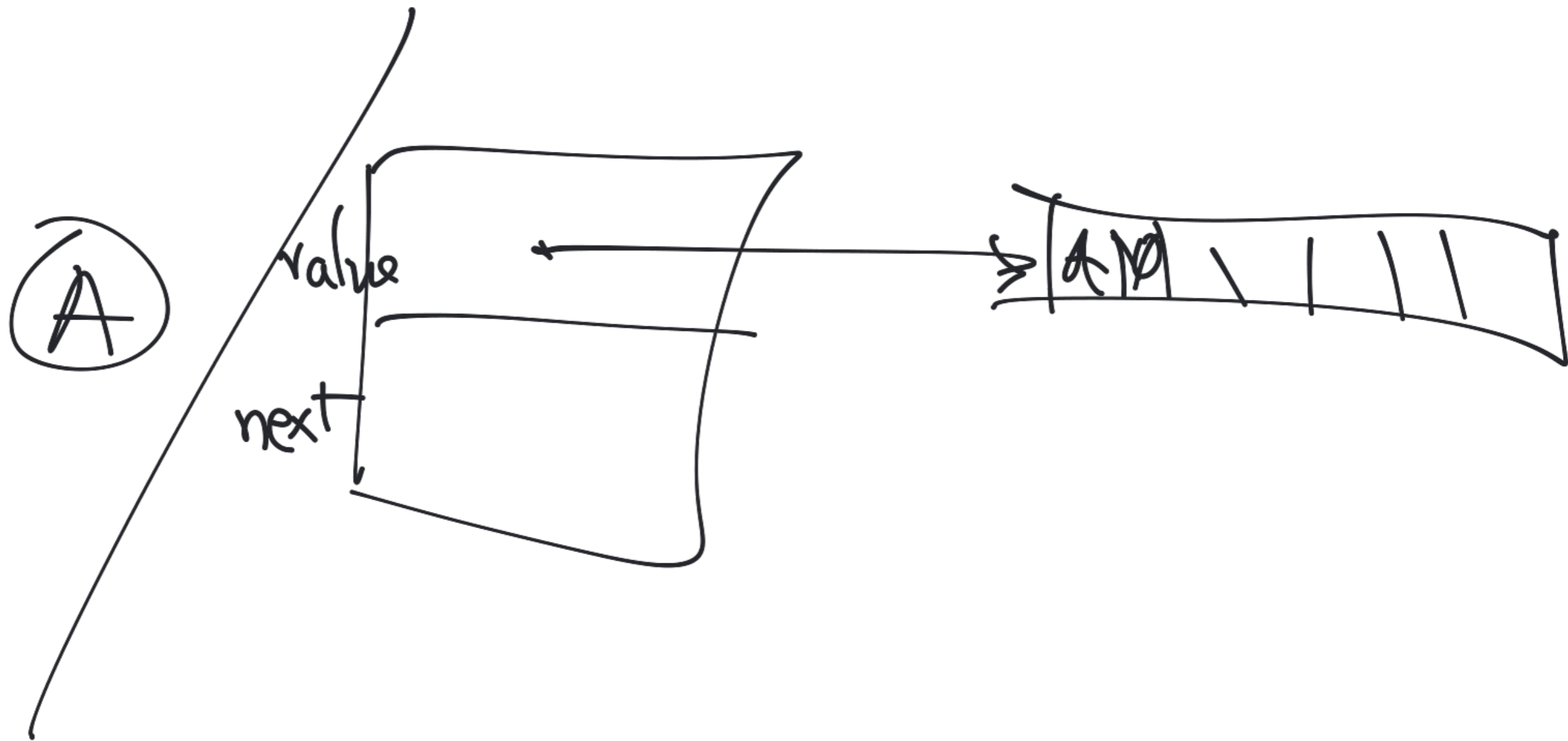
value

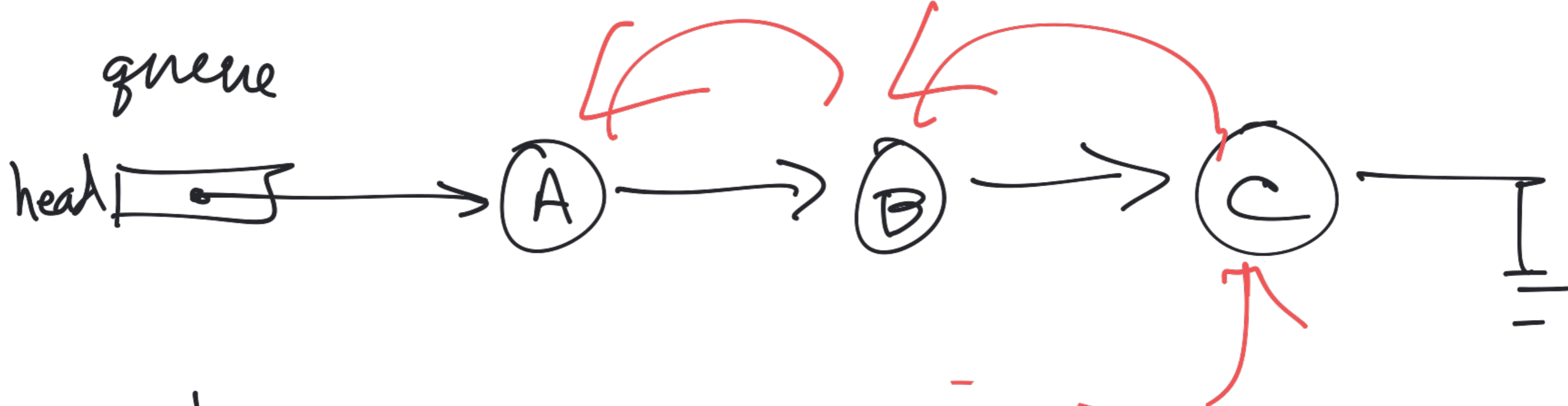
next

last_node

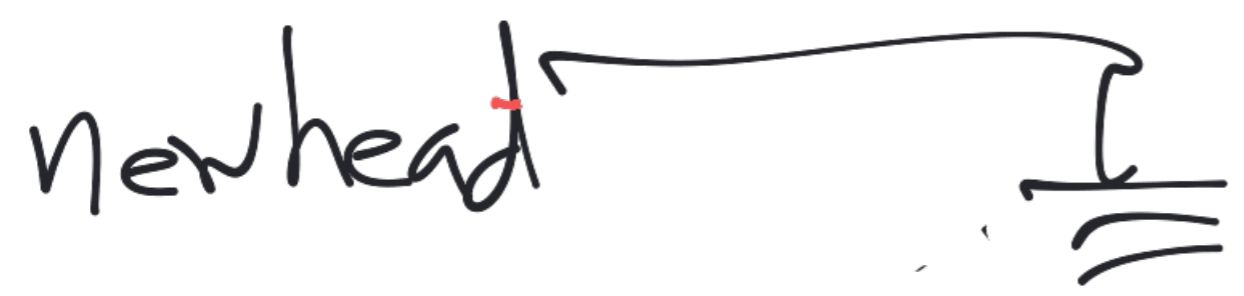


queue





Strategy



for each node in queue
 - insert at front of newhead
 done? queue → head = newhead